

DL5.0C

DL5.0C is designed for residential and small commercial applications, with up to 50 units in parallel and an energy range from 5.12 kWh to 256 kWh. It supports 1C discharge rate. With high cycle times and a long lifespan, it ensures worry-free electricity consumption.



Flexible Expansion

Up to 50 units in parallel, 5.12kWh--256kWh capacity



1C Discharge

Simultaneously supplying power to multiple loads, no need to worry about power outages



Automatic Self-heating

-20°C to 55°C operating temperature (optional)



Easy Installation

Support wall-mounted, floor-mounted, stacked and rack-mounted installations, high space utilization



Long-term Reliability

LFP cells, 6000+ cycles, 10 years warranty



All-round Safety

Short-circuit lockout, surge-resistant, safe and reliable

Model	DL5.0C
Battery Type	LiFePO ₄
Nominal Battery Energy	5.12 kWh
Nomina Capacity	100Ah
Nominal Voltage	51.2V
Operating Voltage	44.8~57.6V
Recomended Charge & Discharge C Rate	0.5C
Maximum Discharge Crate	1C
Recommended Charge/Discharge Current	50A
Max. Charge/Discharge Current	Charge 75A Discharge 100A
Peak Discharge Current	110A(15s)
Depth of Discharge (DOD)	90%
Net Weight	54kg
Dimension[W/D/H](mm)	558/545/150
Charging Temp. Range	0~55°C/-20~55°C (with heating function)
Discharging Temp. Range	-20~55°C
Communication	CAN/RS485/RS232
Cycle Life *	≥6000 Cycles
Protection Level	IP20
WIFI Module	Optional
Expansion	Up to 50 units in parallel
Certification & Safety Standard	UN38.3/CE-EMC/IEC62619/CEI-021/GOST-R
Compatible Inverterst	SMA/Schneider/Victron energy/Ingeteam/Solis/GoodWe/Growatt/Soplanet/Luxpower/DEYE etc.

* Test conditions: 0.2C Charging & Discharging. @25°C, 90% DOD



24.5%
EFFICIENZA
MODULO

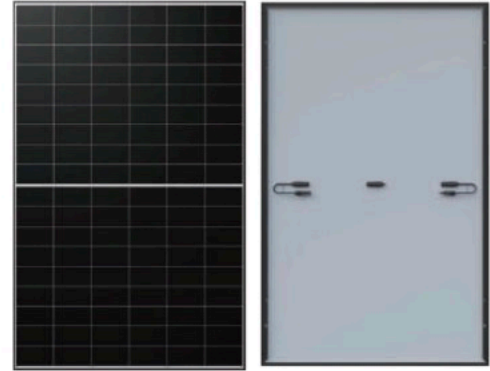
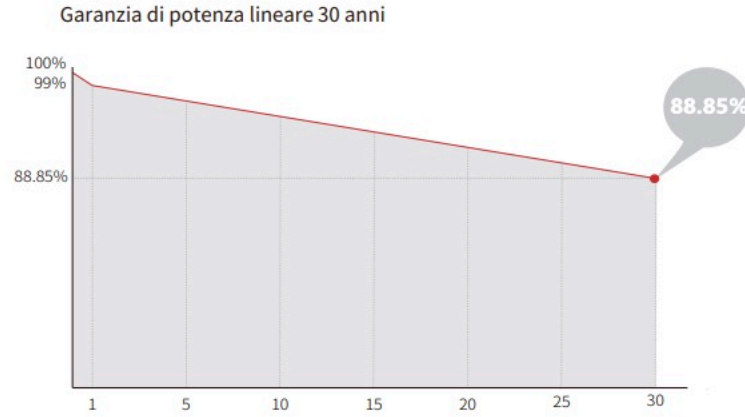
0~3%
TOLLERANZA
POSITIVE

<1%
DEGRADAZIONE
PRIMO ANNO

0.35%
GARANZIA
LINEARE

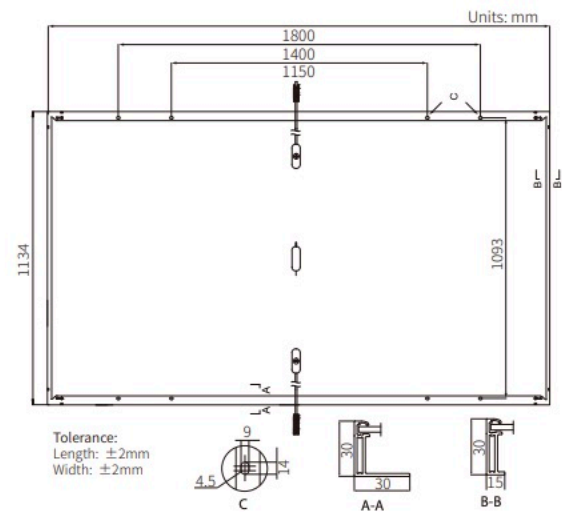
BC-CELL
TEMPERATURA OPERATIVA
CONTENUTA

Valore aggiunto



Parametri Meccanici

Celle	108 (6×18)Back contact N-Type
Junction Box	IP68
Cavo output	4mm ² , +400, -200mm/±1200mm, lunghezza customizzabile
Connettori	Stäubli MC4 originali/PV-LR5 su richiesta
Vetro	3.2 mm antiriflesso temprato
Frame	alluminio anodizzato silver (ordinabile anche nero)
Peso	21.6kg
Dimension	1800×1134×30mm
Packaging	36pcs per pallet / 216pcs per 20' GP / 864pcs per 40' HC



Caratteristiche elettriche STC : AM1.5 1000W/m² 25°C NOCT : AM1.5 800W/m² 20°C 1m/s Test uncertainty for Pmax: ±3%

Tipo modulo	LR7-54HVH-480M		LR7-54HVH-485M		LR7-54HVH-490M		LR7-54HVH-495M		LR7-54HVH-500M	
	STC	NOCT	STC	NOCT	STC	NOCT	STC	NOCT	STC	NOCT
condizioni di test										
Potenza di picco (Pmax/W)	480	365	485	369	490	373	495	377	500	381
Voltaggio circuito aperto (Voc/V)	40.29	38.29	40.40	38.39	40.52	38.51	40.64	38.62	40.75	38.72
Corrente circuito chiuso (Isc/A)	15.13	12.16	15.23	12.24	15.33	12.32	15.43	12.40	15.53	12.48
Voltaggio al MPP (Vmp/V)	33.28	31.63	33.40	31.74	33.51	31.85	33.62	31.95	33.73	32.06
Corrente al MPP (Imp/A)	14.43	11.57	14.53	11.65	14.63	11.73	14.73	11.81	14.83	11.89
Efficienza modulo (%)	23.5		23.8		24.0		24.3		24.5	

Parametri operativi

Temperatura operativa	-40°C ~ +85°C
Tolleranza positiva potenza	0 ~ 3%
Massimo voltaggio di sistema	DC1500V (IEC)
Rating fusibili in serie	25A
NOCT	45±2°C
Classe di isolamento	Class II
Rating internazionale al fuoco	IEC Class C
Rating UNI 9177 al fuoco	Classe 1

Carico meccanico

Massimo carico frontale static	5400Pa
Massimo carico statico sul retro	2400Pa
Resistenza grandine certificata	25mm con velocità 23m/s
Resistenza grandine test terze parti	45mm con velocità 30.7m/s

Coefficienti termici (STC)

Coefficiente termico Isc	+0.050%/°C
Coefficiente termico Voc	-0.200%/°C
Coefficiente termico Pmax	-0.260%/°C

LONGI

LR7-54HVH 475~505M

- Specificamente progettato per applicazioni di generazione distribuita
- Efficienza al vertice, fino al 24.5 %
- Gestione superiore delle ombre tramite il sistema soft breakdown
- Affidabilità superiore con wafer TaiRay N-Type e celle back contact HPBC 2.0
- Testato rispetto alla grandine a 45 mm

25

25 anni di garanzia prodotto*

30

30 anni di garanzia lineare potenza

Certificazione completa di sistema e prodotto

IEC 61215, IEC 61730

ISO9001:2015: ISO Quality Management System

ISO14001: 2015: ISO Environment Management System

ISO45001: 2018: Occupational Health and Safety

IEC62941: Guideline for module design qualification and type approval



S6-EH1P(3-8)K-L-PLUS

Solis Single Phase Low Voltage Energy Storage Inverters

New PLUS model provides solutions for demanding power scenarios

Features:

- Generator-compatible to extend backup duration during grid power outage
- Multiple inverters can operate together to form a microgrid
- Supports dual backup ports for intelligent control of critical and non-critical loads
- 10 seconds of 200% overload capability
- Automatic switchover time is < 4ms, providing seamless transitions from grid to backup
- Ensures excellent power supply stability, keeping the load unaffected by a weak grid or generator supply fluctuations

Models:

S6-EH1P3K-L-PLUS / S6-EH1P3.6K-L-PLUS

S6-EH1P4.6K-L-PLUS / S6-EH1P5K-L-PLUS

S6-EH1P6K-L-PLUS / S6-EH1P8K-L-PLUS



DATASHEET

S6-EH1P(3-8)K-L-PLUS

Models	3K	3.6K	4.6K	5K	6K	8K
Input DC (PV side)						
Recommended max. PV array size	6 kW	7.2 kW	9.2 kW	10 kW	12 kW	16 kW
Max. usable PV input power	4.8 kW	5.76 kW	7.36 kW	8 kW	9.6 kW	12.8 kW
Max. input voltage	500 V					
Rated voltage	330 V					
Start-up voltage	90 V					
MPPT voltage range	90 - 435 V					
Max. input current	16 A / 16 A					32 A / 32 A
Max. short circuit current	20 A / 20 A					40 A / 40 A
MPPT number / Max. input strings number	2 / 2					2 / 4
Battery						
Battery type	Li-ion / Lead-acid					
Battery voltage range	40 - 60 V					
Max. charge / discharge power	3 kW	3.6 kW	4.6 kW	5 kW	6 kW	8 kW
Max. charge / discharge current	70 A	80 A	105 A	112 A	135 A	190 A
Communication	CAN / RS485					
Output AC (Grid side)						
Rated output power	3 kW	3.6 kW	4.6 kW	5 kW	6 kW	8 kW
Max. apparent output power	3 kVA	3.6 kVA	4.6 kVA	5 kVA	6 kVA	8 kVA
Operation phase	L/N/PE					
Rated grid voltage	220 V / 230 V					
Rated grid frequency	50 Hz / 60 Hz					
Rated grid output current	13.7 A / 13.1 A	16.4 A / 15.7 A	20.9 A / 20 A	22.8 A / 21.8 A	27.3 A / 26.1 A	36.4 A / 34.8 A
Max. output current	13.7 A / 13.1 A	16.4 A / 15.7 A	20.9 A / 20 A	22.8 A / 21.8 A	27.3 A / 26.1 A	36.4 A / 34.8 A
Power factor	> 0.99 (0.8 leading - 0.8 lagging)					
THDi	< 2%					
Input AC (Grid side)						
Input voltage range	187 - 253 V					
Max. input current	21 A	25 A	29 A	32 A	40 A	50 A
Frequency range	45 - 55 Hz / 55 - 65 Hz					
Output AC (Back-up)						
Rated output power	3 kW	3.6 kW	4.6 kW	5 kW	6 kW	8 kW
Max. apparent output power	2 times of rated power, 10 s					
Back-up switch time	< 4 ms					
Rated output voltage	L/N/PE, 220 V / 230 V					
Rated frequency	50 Hz / 60 Hz					
Rated output current	13.7 A / 13.1 A	16.4 A / 15.7 A	20.9 A / 20 A	22.8 A / 21.8 A	27.3 A / 26.1 A	36.4 A / 34.8 A
Max. AC passthrough current	35 A	35 A	40 A	40 A	40 A	50 A
THDv (@linear load)	< 2%					
Efficiency						
Max. efficiency	96.2%					
EU efficiency	96.1%					
BAT charged by PV / AC max. efficiency	95.3% / 93.9%					
BAT discharged to AC max. efficiency	93.8%					
Protection						
Ground fault monitoring	Yes					
DC reverse-polarity protection	Yes					
Integrated AFCI 2.0	Optional					
Protection class / Over voltage category	I / II (PV and BAT), III (MAINS and BACKUP and GEN)					
General Data						
Dimensions (W × H × D)	335 × 560 × 227 mm					
Weight	21.6 kg					22.2 kg
Topology	High frequency isolation (for battery)					
Operating ambient temperature range	-40 ~ +60°C					
Ingress protection	IP66					
Cooling concept	Natural cooling				Intelligent fan-cooling	
Max. operation altitude	3000 m					
Grid connection standard	NRS 097-2-1, IEC 62116, IEC 61727, IEC 60068, IEC 61683, EN 50530, MEA, PEA, NBR 16149, NBR 16150					
Safety / EMC standard	IEC/EN 62109-1/-2, EN 61000-6-2/-3					
Features						
DC connection	MC4 plug (PV port) / Terminal Block (BAT port)					
AC connection	Terminal Block					
Display	7.0" LCD display & Bluetooth + APP					
Communication	RS485, CAN, Optional: Wi-Fi, GPRS, LAN					