

Sun Light

High efficiency LED lighting appliance

Descrizione prodotto

Sun Light è un apparecchio di illuminazione a LED ad alta efficienza per illuminazione stradale progettato per essere alimentato a batteria 12 o 24V, ideale per realizzare lampioni stradali ad alimentazione fotovoltaica. Disponibile in diverse taglie, potenze, temperature di colore, ottiche e attacchi per essere usato in varie applicazioni.

[eng]

Product description

Sun Light is a high efficiency LED lighting fixture for street lighting designed to be powered by 12 or 24V battery, ideal for making photovoltaic powered streetlamps. Available in different sizes, powers, color temperatures, optics and couplers to be used in various applications.

[fra]

Description du produit

Sun Light est un appareil d'éclairage à LED à haute efficacité pour l'éclairage public conçu pour être alimenté par une batterie 12 ou 24V, idéal pour la fabrication de lampadaires à alimentation photovoltaïque. Disponible en différentes tailles, puissances, températures de couleur, optiques et attaques pour être utilisé dans diverses applications.

Caratteristiche generali



Tempered glass



Different optics in PMMA



Battery voltage 12 / 24V



Compliant to
EN 13201

[eng]

General features



IP65 with moisture extractor



Efficiency range Lumen/Watt
120÷138



Flow reduction automatic or
control LED by Western CO.
charge controller

[fra]

Caractéristiques générales



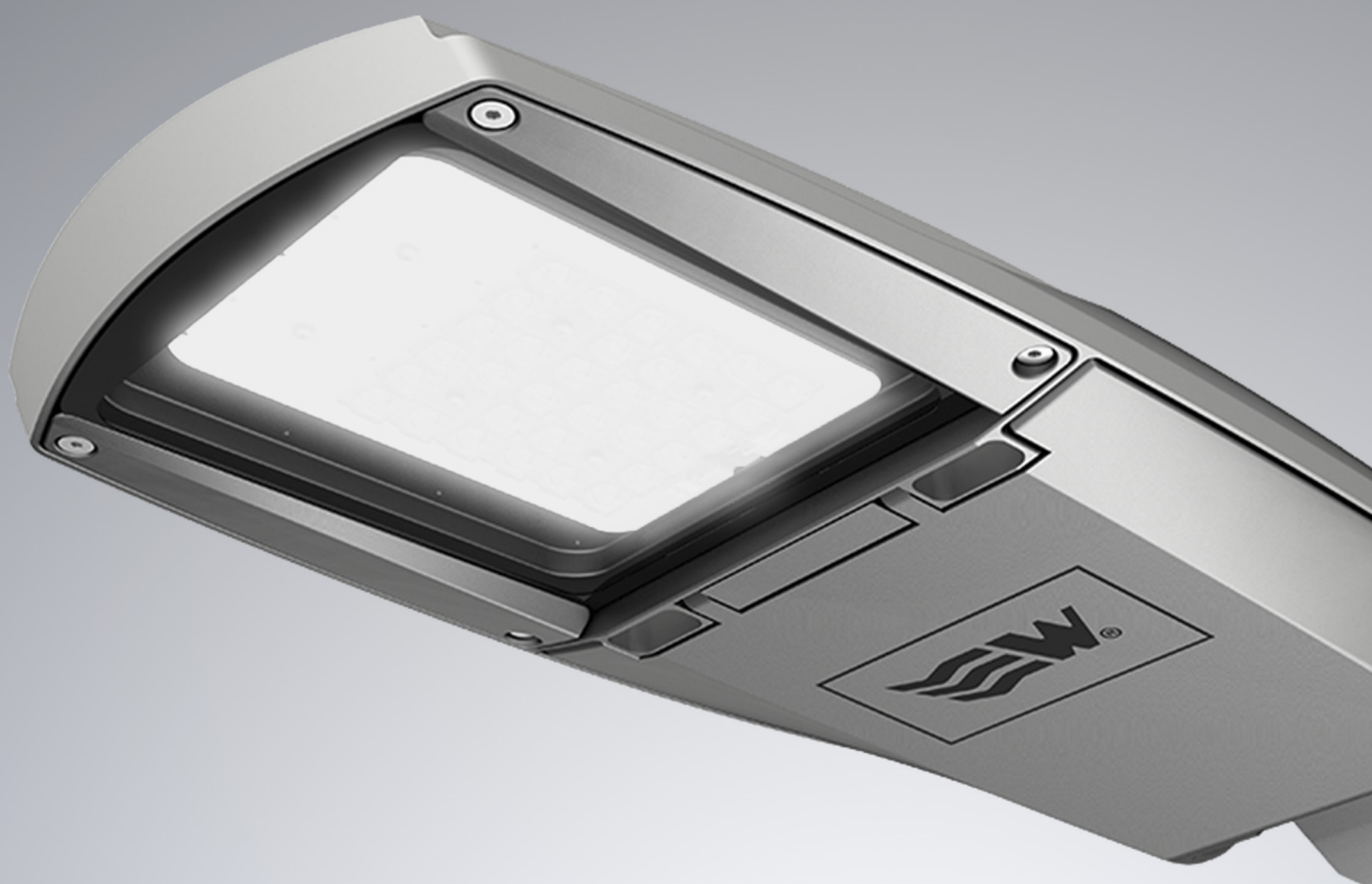
Self-management algorithm



Operating temperature range:
-20°C +57°C



Class of insulation



Sun Light
XS / S / M

Sun Light XS DARK GREY

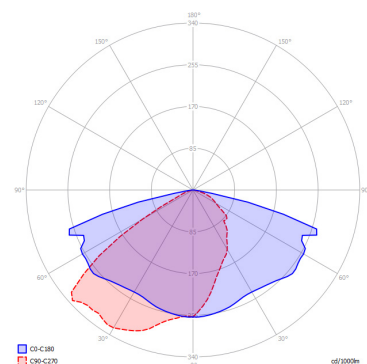
Versione con attacco a braccio tondo
D60mm. RAL7043.

[eng]

Version with D60mm round arm coupler.
RAL7043

[fra]

Version avec connexion à bras rond
D60mm. RAL7043



NAME	NUMBER OF LEDs	COLOR TEMPERATURE / CRI	LUMINAIRE POWER @ Ta=25°C [W]	LED CURRENT [mA]	NOMINAL LED FLUX @ Tj=85°C [lm]	LUMINAIRE FLUX @ Ta=25°C [lm]	LUMINAIRE EFFICIENCY @ Ta=25°C [lm/W]	WEIGHT [kg]
Sun Ligth XS 12 Dark Grey	16	4000°K / >70	10.8	261	2015	1663	150	2.8
Sun Ligth XS 18 Dark Grey	16	4000°K / >70	17.1	371	3121	2578	145	
Sun Ligth XS 24 Dark Grey	16	4000°K / >70	23.3	500	4111	3396	141	
Sun Ligth XS 30 Dark Grey	16	4000°K / >70	30.1	636	5096	4209	136	
Sun Ligth XS 36 Dark Grey	16	4000°K / >70	38.1	797	6199	5121	130	
Sun Ligth XS 42 Dark Grey	16	4000°K / >70	45.2	932	7061	5834	126	

Sun Light XS SILVER

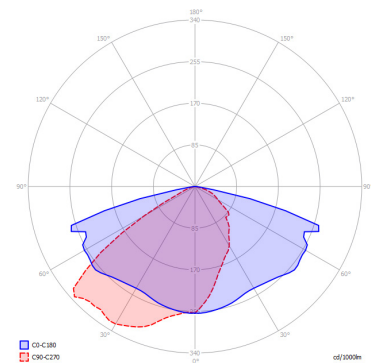
Versione con attacco a braccio tondo
D60mm. RAL9006

[eng]

Version with D60mm round arm coupler.
RAL9006

[fra]

Version avec fixation à bras rond D60mm.
RAL9006



NAME	NUMBER OF LEDs	COLOR TEMPERATURE / CRI	LUMINAIRE POWER @ Ta=25°C [W]	LED CURRENT [mA]	NOMINAL LED FLUX @ Tj=85°C [lm]	LUMINAIRE FLUX @ Ta=25°C [lm]	LUMINAIRE EFFICIENCY @ Ta=25°C [lm/W]	WEIGHT [kg]
Sun Ligth XS 24 Silver	16	4000°K / >70	23.3	500	4111	3396	141	2.8
Sun Ligth XS 30 Silver	16	4000°K / >70	30.1	636	5096	4209	136	
Sun Ligth XS 36 Silver	16	4000°K / >70	38.1	797	6199	5121	130	
Sun Ligth XS 42 Silver	16	4000°K / >70	45.2	932	7061	5834	126	
Sun Ligth XS 24 Silver / 3000K	16	3000°K / >70	23.3	500	3846	3177	132	
Sun Ligth XS 30 Silver / 3000K	16	3000°K / >70	30.1	636	4754	3927	127	
Sun Ligth XS 36 Silver / 3000K	16	3000°K / >70	38.1	797	5774	4768	121	
Sun Ligth XS 42 Silver / 3000K	16	3000°K / >70	45.2	932	6569	5426	117	

Sun Light S SILVER

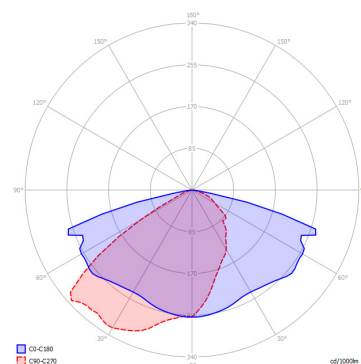
Versione con attacco a braccio tondo
D60mm. RALRAL9006

[eng]

Version with D60mm round arm coupler.
RAL9006

[fra]

Version avec fixation à bras rond D60mm.
RAL9006



NAME	NUMBER OF LEDs	COLOR TEMPERATURE / CRI	LUMINAIRE POWER @ Ta=25°C [W]	LED CURRENT [mA]	NOMINAL LED FLUX @ Tj=85°C [lm]	LUMINAIRE FLUX @ Ta=25°C [lm]	LUMINAIRE EFFICIENCY @ Ta=25°C [lm/W]	WEIGHT [kg]
Sun Ligth S 60 Silver	32	4000°K / >70	60.1	636	10191	8418	136	4.55
Sun Ligth S 72 Silver	32	4000°K / >70	76.2	797	12399	10241	130	
Sun Ligth S 84 Silver	32	4000°K / >70	90.5	932	14124	11666	126	

Sun Light M SILVER

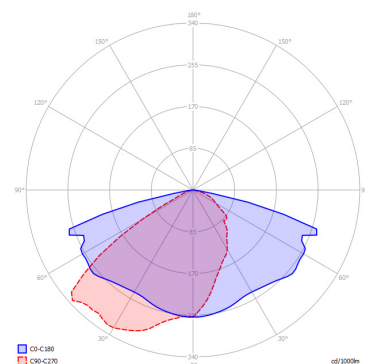
Versione con attacco a braccio tondo D60mm. RAL9006

[eng]

Version with D60mm round arm coupler. RAL9006

[fra]

Version avec fixation à bras rond D60mm. RAL9006



NAME	NUMBER OF LEDs	COLOR TEMPERATURE / CRI	LUMINAIRE POWER @ Ta=25°C [W]	LED CURRENT [mA]	NOMINAL LED FLUX @ Tj=85°C [lm]	LUMINAIRE FLUX @ Ta=25°C [lm]	LUMINAIRE EFFICIENCY @ Ta=25°C [lm/W]	WEIGHT [kg]
Sun Ligth M 110 Silver	48	4000°K / >70	114.3	797	18470	15255	130	5.60
Sun Ligth M 130 Silver	48	4000°K / >70	135.7	932	21037	17377	126	

La Western CO. si riserva di aggiornare i flussi e l'efficienza degli apparecchi riportati in questo catalogo in base all'evoluzione tecnologica dei dispositivi LED.

[eng]

Western CO. reserves the right to update the flows and efficiency of the luminaires shown in this catalog based on the technological evolution of LED devices.

[fra]

Western CO. se réserve le droit de mettre à jour les flux et l'efficacité des luminaires présentés dans ce catalogue en fonction de l'évolution technologique des appareils LED.